

Communique'

President - Scott Lane 599-7240 Vice President – Ed Salzwedel
Secretary – Clarence Johnson Treasurer – Carl Williams, M.D.
[website – www.sabbsa.org] [P.O. Box 34478, San Antonio, TX 78265]

July 2023

We pray you are doing well. We are now in the midst of a very typical hot South Texas summer.

The theme of this month's **Communique'** are articles describing God's designs in nature and His showing us hints of His creative and infinite knowledge in His Word. We also have two articles from both an evolutionist and creationists showing how current scientific organizations can be controlled by their own bias and not open to a free discussion of evidence.

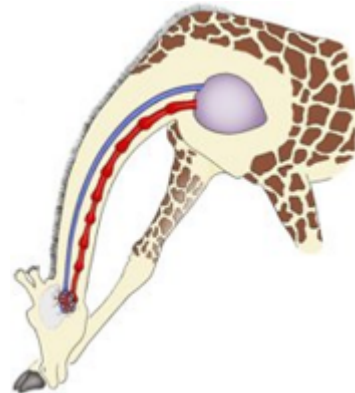
Our **Genesis Commentary** this month features the **Death of Abraham, and the Legacies of both Isaac and Ishmael**. As always, we have a full rundown of all the creation education opportunities coming up in our area. This includes a summer long creation seminar at Crestview Baptist Church on Wednesday evenings. We pray you find something in these pages to encourage and enlighten so that you can operate with a truly biblical worldview.

Evolution's Tall Tale — The Giraffe Neck by Scott Lane and Jonathan Witt

Giraffes can grow to be 18 feet tall or more. How does it get blood to its head when standing up? It can do so because it has a powerful blood pump. Its heart is 2½ feet long and weighs 25 pounds. In comparison your heart is nearly 5 inches long and weighs less than a pound. This huge heart produces the highest blood pressure in all the animal kingdom. To complement such high blood pressure God designed this animal with the thickest blood vessel walls found in any mammal.

It has one-way valves in its neck arteries like we do in our leg veins so that between pumps the blood cannot back up and recede back down the neck. However, when it bends down to get a drink, there is enough blood pressure with the combination of its heart's huge blood pressure and the force of gravity to burst all of the blood vessels in its brain. So how does it ever get water?

Fortunately, God foresaw that and planned for its need to bend its neck to the ground occasionally for water or food, clean itself or nudge their young. As its head lowers two things are programmed and designed into its body to happen. The one-way valves in the arteries of his neck close shutting off the flow of blood from the heart (diagrammed at right). The blood which is still speeding on its way to its head hits a spongelike group of small capillary vessels in the back of his head through which the blood must diffuse slowing the rapidly traveling blood. Since the blood flow from the heart has been cut off by the one-way valves, the lowered fluid pressure in the brain prevents these capillaries from bursting. Note, this all had to be preprogrammed into the giraffe from the start or it



would have blown its brains out every time it tried to bend down to the ground till this system was developed by evolution showing this system did not evolve!

New problem. When the giraffe rises up, there is no longer enough blood pressure to get blood to its head and it should pass out! This is especially a problem if the reason it raised its head was because it saw a lion approaching prompting its immediate desire to beat a hasty retreat!

Fortunately, God made provision in His design of the giraffe for this as well. When it raises its head three things happen. The arterial one-way valves in its neck open allowing blood to speed back up the neck to its brain. But the blood must travel up to 18 feet in the air so while that blood is on its way, the spongelike set of capillaries in the back of its head squeeze out its blood to give quick oxygenation to its brain. And the veins in its neck partially close giving back pressure to the blood in its head so it won't drain too quickly till its blood pressure is equalized with the new blood coming up from its heart. All of this happens every time the giraffe rises up so it does not pass out and give the lion a free meal!

How many giraffes had to blow their brains out bending down or pass out standing up before this amazing set of system was developed by chance evolution? These systems are irreducibly complex and had to be there from the creation of this animal. This animal is not viable till all of these systems are fully functional. All of this (dare I say 'incredible') functionality shows it was designed this way from the start by an unbelievably brilliant Creator! (The remainder of this article was excerpted from an article by Jonathan Witt from Evolution News and Science Today.)

The giraffe's neck has long been a beloved icon of evolutionary theory. According to the story, one of the giraffe's short-necked ancestors had a slightly longer neck, which helped him reach leaves the other animals on the savannah couldn't. This gave him a survival advantage he passed on to his offspring. Or maybe the female giraffes really dug his slightly longer neck, giving him a reproductive advantage. Same result. He passed his slightly longer neck on to his offspring. Rinse and repeat a few thousand times, and voila, the lineage ends up with 600-pound, six-foot long giraffe necks. (This is a dumb story referring to Lamarckian ideas which have been totally disproved).

But the devil is in the details. An article in the journal Nature frankly characterizes the evolution of the giraffe's cartoonishly long neck as "a puzzle":

There should be a good reason for the extraordinary length, because it causes hardship. A giraffe's heart needs to pump blood 2 meters up to the head, which requires high blood pressure and management to avoid fainting or stroke. "It's beautifully adapted to this, but it's a big cost," says Rob Simmons, a behavioral ecologist at the University of Cape Town in South Africa, who was not involved in the study.

One prevailing theory is that giraffes evolved longer necks to reach higher trees for food. "This is widely believed; it's really entrenched," says Simmons.... [But] research has shown that giraffes tend to eat from lower levels, and tall giraffes aren't more likely to survive drought, when food competition is highest. Another idea is that giraffes evolved longer necks for sexual competition, with male giraffes engaging in violent neck-swinging fights and longer necks attracting mates.... [But] males don't have longer necks than females.

Fossil Phantasms

Fossils aren't much help either. German geneticist Wolf-Ekkehard Lönnig surveyed the literature on fossils and giraffe evolution and reports that there is an abundance of fossils from giraffes and creatures said to be either giraffe ancestors or closely related to those ancestors, but what remains stubbornly absent is a smooth series of transitional fossils from short-necked to long-necked. He writes:

No continuous series of fossil links leads to the Giraffa or Okapia. “The giraffe and the okapi of the Congo rain forest are considered as sister groups, the origins of which are still not known” (Devillers and Chaline 1993, p. 247). Similarly, Starck (1995, p. 999) remarks: “The ancestry of Giraffidae is disputed.” Wesson (1991, pp. 238-239) agrees with these statements about giraffe fossils, as follows: “The evolving giraffe line left no middling branches on the way, and there is nothing, living or fossil, between the moderate neck of the okapi and the greatly elongated giraffe. The several varieties of giraffe are all about the same height.”

An okapi, keep in mind, is an extant even-toed ungulate that looks not dramatically different from a large deer. Between it and the giraffe there stretches a great morphological gulf.

There was a much-ballyhooed fossil find reported in 2015 purporting to bridge that great gulf. A Live Science article, “7-Million-Year-Old Fossils Show How the Giraffe Got Its Long Neck,” promised the moon, and the lead researcher, Nikos Solounias, was only slightly more restrained. “We actually have an animal whose neck is intermediate [in length] — it’s a real missing link,” he said. But as the evolutionists behind the study later concede, they don’t even think the creature, *Samotherium major*, is a direct ancestor of the giraffe. (Hint, as in all cases of supposed evolution, the missing links are still missing because they never existed!)

Stretching the Truth

More fundamentally, as researchers learn more and more about giraffe physiology, it’s increasingly clear that hundreds, maybe even thousands, of genetic changes would be needed to arrive at a functioning giraffe; many of the changes would need to arrive simultaneously for the creature to survive; and such big-jump changes would need to occur numerous times over millions of years.

Yes, natural selection could jump in to preserve these coordinated mutation freak events if they ever occurred, but first the freak-event mutations would have to occur.

Oxford biologist Richard Dawkins, famous for his many books defending atheism and evolutionary theory, characterizes the difference between a giraffe’s neck and that of its short-necked ancestor as relatively “slight.” Dawkins writes: “The giraffe’s neck has the same complicated arrangement of parts as the okapi (and presumably as the giraffe’s own short-necked ancestor). There is the same sequence of seven vertebrae [Lönig contests this], each with its associated blood vessels, nerves, ligaments, and blocks of muscle. The difference is that each vertebra is a lot longer, and all its associated parts are stretched or spaced out in proportion.”

So, how hard could it be to evolve?

Dawkins’s characterization is one a Darwin disciple could love, but never an attentive engineer, or any biologist with a working familiarity with giraffe physiology (or the information we started this article with). As Lönig puts it, Dawkins “simplifies the biological problems to a degree that is tolerable for evolutionary theory, but not realistic with regard to the biological facts.”

Giraffe Spectacular

Lönig describes several things that must be either engineered or reengineered to arrive at a functional giraffe from a short-necked ancestor. First, giraffes, like cows and many other grazing animals, are ruminants, meaning they regurgitate a half-digested cud and chew on it before swallowing the food a second time, helping them digest tough fibrous grass and leaves. But to pull off this trick, a giraffe, with its neck as tall as a man, needs “a special muscular esophagus,” Lönig explains. So that’s one reengineering challenge.

Lönig gives so many more that there isn’t room for them all here. His book debunking giraffe evolution, *The Evolution of the Long-Necked Giraffe*, is dense and thorough. But he helpfully quotes Gordon Rattray Taylor, who concisely summarized several of the reengineering challenges in his book *The Great Evolution Mystery*:

Nineteenth-century observers assumed that the giraffe had only to develop a longer neck and legs to be able to reach the leaves which other animals could not. But in fact, such growth created severe problems as we detailed at the start of this article. However, much more intractable are the problems of breathing through an eight-foot tube. If a man tried to do so, he would die — not from lack of oxygen so much as poisoning by his own carbon dioxide. For the tube would fill with his expired, deoxygenated breath, and he would keep re-inhaling it. Furthermore, one study group found that the blood in a giraffe's legs would be under such pressure that it would force its way out of the capillaries. How was this being prevented? It turned out that the intercellular spaces are filled with fluid, also under pressure — which in turn necessitates the giraffe having a strong, impermeable skin. To all these changes one could add the need for new postural reflexes and for new strategies of escape from predators. It is evident that the giraffe's long neck necessitated not just one mutation but many — and these perfectly coordinated.

Percival Davis and Dean Kenyon cogently tease out the significance of all this:

In short, the giraffe represents not a mere collection of individual traits, but a package of interrelated adaptations. It is **put together according to an overall design** that integrates all parts into a single pattern. Where did such an adaptational package come from? According to Darwinian theory, the giraffe evolved to its present form by the accumulation of individual, random changes preserved by natural selection. But it is difficult to explain how a random process could offer to natural selection an integrated package of adaptations, even over time. Random mutations might adequately explain change in a relatively isolated trait, such as color. But major changes, like the macroevolution of the giraffe from some other animal, would require an extensive suite of coordinated adaptations.

A Lottery-Winning Fiend

This means that if we hold to the evolutionary story for the giraffe neck, we must go from believing that the giraffe lineage won a series of longshot lotteries over millions of years, to believing that the various ancestors in the lineage each won numerous longshot lotteries simultaneously and managed to do this over and over.

To grasp the enormous difference, imagine that the President of the United States takes a winding summer trip through the American heartland and buys a state lottery ticket in each of those 45 states that has a state lottery. (Not all do.) Later that summer it emerges that every one of the lottery tickets the President bought was a jackpot winner. The President's handlers attribute this to "dumb luck," but you can bet that 45 state lottery commissioners will smell a rat and, if brave enough, launch an investigation. They will reasonably infer that all those wins were somehow gamed in the President's favor — that is, were intelligently designed. There are long odds, and then there are odds so long, and so beneficial to someone, that reasonable people begin to look for other explanations.

In the giraffe's case, a bit of reasoning goes a long way. Blind evolution doesn't look ahead and coordinate a group of changes for some future advantage. It's blind and must proceed by one small useful step at a time. No evolutionist, for instance, believes that a small number of mega-mutations turned a land mammal into a whale.

But what if loads of changes are needed simultaneously to successfully make a biological transition, or even just a significant step in a larger transition? We know of only type of cause with the demonstrated ability to meet such a challenge, and it isn't dumb luck and natural selection. The engineering marvel that is the giraffe, long neck and all, was intelligently designed by the Creator of everything!

I Got Canceled by the National Science Teaching Association

By Herman B. Bouma

Cancel culture reigns supreme in mainstream science, as I can tell you from personal experience. A recent instance involves the National Science Teaching Association (NSTA) and its cancellation of my poster presentation, which had been scheduled for the NSTA annual conference March 22-25 in Atlanta.

On September 2022 I submitted a proposal to speak at the conference. My topic was “The Top 10 Scientific Arguments Against Darwin’s Theory — According to Darwin Himself.” Darwin took great care to reply thoughtfully to the scientific arguments against his theory and, by the time of the sixth edition of *The Origin of Species* in 1872, approximately one-third of his book consisted of his responses to 37 scientific arguments against his theory (all of which still have merit today). Based on Darwin’s discussion in *The Origin of Species*, I determined what Darwin likely would have considered to be the top ten scientific arguments against his theory.

On December 29, 2022, I received an email from the NSTA conference team inviting me instead to submit a proposal for a poster presentation. The email stated that my topic was “evaluated as one that is significant and of interest to your colleagues.” On January 9, 2023, I submitted a proposal for the poster presentation, which was then approved and, beginning in January, was listed in the online conference agenda. The listing presented the main takeaway of the poster presentation as follows: “Darwin acknowledged that there were ‘a crowd of difficulties’ with his theory and stated, ‘Some of them are so serious that to this day I can hardly reflect on them without being in some degree staggered; but, to the best of my judgment, [they] are not, I think, fatal to the theory.’”

Working on My Poster

In February I worked on my poster presentation and also prepared a handout for it. On February 22 I went to a local print shop and had 50 copies made of the handout. In the evening of the same day, I attended “Atlanta 2023 — Poster Session Support Web Seminar,” a webinar sponsored by NSTA to help those preparing poster presentations.

However, on February 24, I received an email from Tricia Shelton, NSTA’s Chief Learning Officer, stating that “it has come to our attention that your session may be promoting creationism. . . . The purpose of this email is to inquire about your poster presentation to find out if it is focused on creationism or on modern evolutionary science ideas articulated in our national standards.” I responded on February 25, “My poster presentation is not focused at all on creationism. It is focused only on Darwin’s ideas and what he considered to be valid scientific arguments against his theory.”

Resolved by Modern Science?

I then received an email from her on February 28 in which she asked if I was seeking to challenge modern evolutionary theory by using intelligent design. She also said my poster would need to explain how each of the top ten scientific arguments against Darwin’s theory has been resolved by “modern scientific evidence.”

I replied that my poster presentation did not challenge evolution by using intelligent design. Rather, it only set forth what Darwin himself thought were the top ten scientific arguments against his theory, specifically, against his proposed mechanism for evolution, i.e., the application of natural selection to randomly produced variations. Thus, it sought to promote an objective evaluation of Darwin’s proposed mechanism.

I also stated that the scientific debate continues with respect to this mechanism and that I did not believe the top ten scientific arguments have been resolved using modern scientific evidence. I stated that if I was

mistaken, I would appreciate her help and asked her to let me know what modern scientific evidence has resolved each of the ten arguments.

A Final Email

I received a third and final email from Ms. Shelton on March 7. In this email, instead of pointing out any modern scientific evidence resolving the ten arguments, she stated that my poster presentation focused only on Darwin's words and did not "reference Framework-aligned teaching approaches." However, the guidelines for poster presentations do not require that a poster presentation "reference Framework-aligned teaching approaches." It seemed she was just looking for an excuse to cancel my poster presentation. She said my poster presentation could not be accepted "in its current state" and canceled it without giving me any opportunity to bring it into compliance.

It is bizarre that Ms. Shelton canceled my poster presentation when, as indicated earlier, the NSTA conference team found my topic to be "significant and of interest to your colleagues." In her zeal to protect the established narrative about evolution, Ms. Shelton was determined to shut down any debate about Darwin's theory, even if it was debate fostered by Darwin himself.

The "Censorship Industrial Complex"

At a Congressional hearing earlier this month, held by the House Select Subcommittee on the Weaponization of the Federal Government, one of the witnesses, Michael Shellenberger, warned the lawmakers of "the growth and power of a censorship industrial complex run by America's scientific and technological elite," a complex that has eroded Americans' freedom of speech. This censorship industrial complex has been at work for quite some time now in attempting to shut down any debate about Darwin's theory.

Most people believe that when it comes to disagreements on policy and scientific theory, the best approach is to promote debate rather than censorship. Open and honest debate has always been the American way. However, in the case of Darwin's theory, debate is rejected in favor of censorship. This is contrary to the hope of Charles Darwin himself, who wrote, "I look with confidence to the future, — to young and rising naturalists, who will be able to view both sides of the question with impartiality." Those "young and rising naturalists" are out there, and I've learned much from them. But the National Science Teaching Association, for one, has no interest in doing so.

Editor's Note: this has been the strategy in science and academia for the past 40+ years. No debates, stifle all discussion of alternative theories except Darwin. This is not science nor a pursuit of the truth, but a coordinated control of all speech to support what is now a religion and not a scientific theory. The next article will expand on this phenomenon in the upper echelons of science and academia today.

Science's blind side by Jonathan Sarfati and David Catchpoole

The public perception of science is often that 'science is neutral', but in practice, the ruling 'paradigm' can be so strong that conflicting data and anomalies are often ignored. Of course, when this is pointed out, there is frequently denial and resistance from certain quarters in the scientific community (*especially* in relation to the origin-of-life issue). It has been reported that:

'Kuhn aroused the ire of many scientists when he argued that paradigms have philosophical and psychological components and are not readily discarded in the face of anomalous evidence.'

One such scientist who, in the context of the creation/evolution debate, would like the public to view science

as being truly objective is renowned anti-creationist Ian Plimer. He has written:

'If new evidence disproves a scientific theory, then the existing theory is rejected or undergoes revision in the light of the new evidence.'

If Dr Plimer actually believes that, then his view is naïve in the extreme. In reality, scientists are often in the grip of the prevailing paradigm (i.e., belief system) of the day. (Something that, as one of the few voices railing against the current global warming alarmism paradigm, Ian Plimer has recently experienced first-hand.)

The philosopher of science Thomas Kuhn (mentioned above) demonstrated the stifling hold that the prevailing 'accepted' view can have on researchers in his influential book *The Structure of Scientific Revolutions*. He described true scientific revolutions as being nothing less than wholesale *paradigm shifts*. But these are rare, and Kuhn described how science in the grip of a widely-accepted paradigm **tolerates anomalies** and some **contrary evidence** for some time in the hope of solving them *within* the paradigm.

Also noteworthy is the fact that, as Professor Evelleen Richards, a non-creationist historian of science at the University of New South Wales, Australia, has pointed out, scientists challenging the ruling paradigm find it hard to get published or receive research grants.

And here's another key observation from a non-creationist, Hubert Yockey, regarding the stranglehold a paradigm can have, especially in the absence of any known alternative:

'The history of science shows that a paradigm, once it has achieved the status of acceptance (and is incorporated in textbooks) and **regardless of its failures**, is declared invalid only when a new paradigm is available to replace it.

Another philosopher of science, Imre Lakatos, pointed out that the ruling paradigm can be further protected with *auxiliary hypotheses*. Any contrary evidence is blamed on the failure of one of these hypotheses, which is then sacrificed to protect the *core theory*. *Such auxiliary hypotheses have been used, abused, modified and discarded to prop up both the Big Bang theory as well as the Modern Synthesis theory of Evolution. (Italics mine).*

'Seven Sisters' similarities point to Babel, not Evolution by David Catchpoole

A Winston Churchill Fellow, Australian Aboriginal woman Susie Betts, studied indigenous creation stories involving the Seven Sisters star constellation, or the Pleiades. Her research took her to North and South America.

She anticipated similarities with her own Wirangu people's creation story. In this, the 'Orion the hunter' constellation (the hunter 'Tgilby' in their language) falls in love with and chases the Seven Sisters ('Yugarilya').

And so it proved. "Her research found Indigenous people from across the globe shared creation links to the Seven Sisters constellation."

But why should cultures as geographically diverse as these and others (e.g., ancient Greece, Ukraine) similarly regard the stars in the Pleiades as seven women? And most often sisters? And chased by a hunter? The oldest known Greek mythologist Hesiod (8th century BC) had a line "Pleiades flee mighty Orion". The book of Job, probably the oldest completed book of the Bible, records God asking Job, "Can you bind the chains of the Pleiades or loose the cords of Orion?" (Job 38:31).



It would be very difficult to explain from an evolutionary/long-age perspective! Nothing about the stars' appearance suggests sisters—or even women. Also, why would the same star pattern suggest a hunter to both the ancient Greeks and to the Wirangu people? So, it would be a remarkable coincidence if the stars-to-sisters connection had occurred more than once by chance—let alone in cultures across the globe!

Rather, this points to the truth of the Bible's account of the dispersal from Babel, just a few thousand years ago. All of these cultures had a seminal account from which their naming the stars and mythos came from, and it is most logical that all of these stories sprang from their all initially knowing the Job account before the dispersion at Babel.

Gravity in Space (by Scott Lane)

There is even more to this story of Orion and the Pleiades as the Bible describes their gravitational relationship in space. Job 38:31-33 (ASV) says: Canst thou bind the cluster of the Pleiades, or loose the bands of Orion? Canst thou lead forth the Mazzaroth (the Zodiac of constellations) in their season? Or canst thou guide the Bear with her train? Knowest thou the ordinances (laws) of the heavens? Canst thou establish the dominion thereof in the earth?

These verses, according to many scholars, indicate that either Job or his adviser understood that gravity is an operational force of nature in the skies. Now, to many of us, this seems a stretch to say that, but let me explain something you may not know. Most constellations (groups of stars) and other star clusters (asterisms) in the sky are made up of stars many thousands of light-years apart from one another and are not connected by their own gravity. They only look to be next to one another from our two-dimensional view of them from the Earth, but they are not.

Of all the identified star groups visible to the naked eye, the Pleiades (Job 38:31) star group (also known as the "Seven Sisters") is one of a very few star groups actually close enough to each other physically (not just as they appear in the sky to the naked eye) and it is now known, they are a gravitationally bound star group traveling in the same direction. Most other star groups visible to the naked eye are unbound, with the possible exception of the Hyades and just a very few other groups visible to the Hebrews in biblical times. Without telescopes and modern apparatus, it was impossible for Job to know that these stars were gravitationally linked, and yet the Bible called this star group out of the hundreds of star groups across the sky, inferring they were linked. The odds against citing this truth by accident are mathematically impossible.

To make it clearer that there is insider information going on here is how the writer added the second clause of this verse, "or loose the bands of Orion." This indicates knowledge that the stars in Orion's belt are actually three-star systems that are not gravitationally bound, but which are flying apart from one another in space in three separate directions (they are "loosed from one another"). Further, this verse refers to other star clusters in the sky and makes a note of their movements being governed by the "ordinances of the heavens." This comment comes more than 3500 years before Sir Isaac Newton formulated the laws of motion, which describe the laws (ordinances) of the heavens which govern star's motions. This verse shows that Job had correct and detailed astronomical information far ahead of his time!



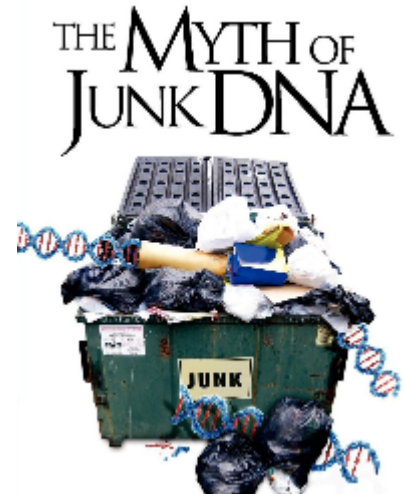
Twelve “Shocking” Discoveries for Evolution

excerpted and adapted from ERIC H. ANDERSON associated with the Discovery Institute

The ENCODE studies completely debunked the mythical “junk DNA.” Other than ENCODE, what else has shaken the foundations of the evolutionary myth?...

Here Are Twelve; Likely There Are More

1. Growing appreciation for frameshifting encoding.
2. Growing appreciation for bi-directional encoding.
3. Early evidence that some so called “neutral” mutations may not in fact be neutral.
4. Massive and extensive role for RNAs in cellular processes. Yes, this relates to ENCODE, but deserves to be mentioned in its own right, as there is rapidly growing experimental evidence for functional roles of specific RNAs.
5. The need for regular maintenance and care of DNA, such as the critical role of topoisomerase that Joe Deweese studies. This is a supercoiling problem with a two-stranded DNA.
6. The growing list of alternative genetic codes. The complexity of this information system is mind boggling!
7. Directly contrary to the evolutionary prediction, with more genomes in the database, the number of lineage-specific or taxonomically restricted genes. Not here and there, but extensive and pervasive. This is an absolutely massive problem for evolutionary theory.
8. Many functional roles have been identified for the inappropriately named “pseudogenes.” This counters one of the most loudly proclaimed evidences for blind undirected evolution.
9. Growing evidence for functional roles for some so-called “endogenous retroviruses.” There’s less information here so far, but it appears to be trending in the same direction as pseudogenes and other “junk DNA” claims generally.
10. Clear genetic-based evidence that several of the most loudly touted examples of evolution are in fact degradative. There is Michael Behe’s work of course, as well as Scott Minnich’s lab work and analysis of Lenski’s long term evolutionary experiment. The importance of this cannot be overstated. It is one of the few areas where we have real experimental data, as opposed to ideas, conjectures, and hand-waving claims about what evolution is supposed to be able to accomplish. And the evidence is extremely clear, evolution doesn’t work! It does not generate new information.
11. Related to taxonomically restricted genes, but this needs to be mentioned in its own right: The grand hope of comparative genomic studies was to produce a coherent tree that would show the true evolutionary history. Exactly the opposite has happened. It is an absolute mess, with contradictions at every turn and nothing even approaching a unified evolutionary history. It’s reached the point where even prominent evolutionists have started abandoning the tree model altogether, reposing their hope in convergent evolution, HGT, some as-yet-undiscovered process, etc.
12. Less directly related, but perhaps worth mentioning:
 - (a) Growing recognition that protein folding requires careful control in many cases, not just an automatic fold. And, no, AlphaFold has not “solved” the problem from first principles.
 - (b) Growing support for the idea of protein rarity, and isolated regions in search space. This is exactly what we see in designed systems, and the opposite of what’s predicted by evolutionary theory.



This all expands upon the list of reasons why when people ask me at seminars “What is the best scientific evidence for God’s creation we have?” I respond with “DNA”.

Engineering Principles Explain Biological Systems Better than Evolutionary Theory

by Brian Miller, Evolution News & Science Today

Since antiquity, scholars have debated whether the appearance of design in life was the product of a transcendent mind or undirected natural processes. The latter view rose to dominance after the scientific community largely embraced Darwin’s theory of natural selection. In the last few decades, the hegemony of the standard model for evolution has started to wane. Recent discoveries have forced biologists to replace evolutionary assumptions with design-based assumptions, language, and methods of investigation. This trend is to a large extent driven by the observation that the same engineering motifs and patterns employed in human creations are pervasive in living systems. What is becoming increasingly clear is that engineering principles far better explain nearly every aspect of life than does evolutionary theory. This conclusion perfectly coincides with the central Christian doctrine that life was designed by God and not an unintended accident of nature.

Introducing the Atomists

Since ancient times, scholars have debated whether everything in the world was simply the product of natural processes or derived from the plans of a supreme intellect (Lloyd 1970). The ancient form of the former philosophy is termed atomism. Its adherents believed that matter was composed of indivisible “atoms” that interact according to various rules. The interactions of the atoms, chance, and time resulted in everything observed in our world. The modern form of this philosophical tradition is termed scientific materialism.

The atomists developed evolutionary theories to explain the appearance of design in life. These theories seem eerily familiar to modern ears. The Greek physician Hippocrates proposed in the late 5th or early 4th century BC a model for heredity and adaptation that Charles Darwin described as nearly identical to his own (Tsiompanou & Marketos 2013). And the poet Lucretius developed in the 1st century BC an evolutionary framework based on a primitive form of natural selection (Campbell 2004). Lucretius’ agenda was to remove teleology (aka design) and by extension the influence of any deity from the world.

In stark contrast, philosophers such as Plato and Aristotle rejected the claim that matter had in itself the capacity to self-organize into living creatures. Instead, they believed that a transcendent mind envisioned the architectural plan or design logic of every distinct creature. And the design plan detailed how the matter would be arranged in a creature’s final form. That form would never have occurred without external direction.

Some scholars have argued that Aristotle’s views are more compatible with scientific materialism than with ID (Feser 2019). But such claims result from a misreading of Aristotle’s writings (Bos 2003, 2018; Gerson 2005; Henry 2019). He, like Plato, would have aligned himself with modern design proponents far more than with scientific materialists.

Modern Intelligent Design Theory

The arguments the ancient philosophers employed to defend their conclusion of design in life (Archer-Hind 1888; Aristotle 2010) resemble those promoted by proponents of design today. And the atomists’ justification for ignoring the evidence for design resembles arguments by modern scientific materialists (Sedley 2008). This conflict was reflected in the opening chapter of the Apostle Paul’s letter to the Romans where he described

how the clear evidence for God's "eternal power" is "understood by the things that are made" (Keener 2009). The apostle would have seen the design-evolution debate today as a continuation of the same conflict that raged in the 1st century.

Darwin developed the modern version of the evolutionary theory, and he, like his ancient predecessors, argued that evolutionary processes could mimic the creative power of an intelligent agent in generating biological features of any level of complexity and ingenuity. More specifically, natural selection could act as a designer substitute empowering the environment to act as a creative agent, thus removing the need for a creator. Such reasoning allowed evolutionists simply to dismiss any evidence for design, no matter how conclusive, as merely an artifact of a blind, undirected process that did not have any end goal in mind.

A Return to Atomism

Francisco Ayala, a former president of the American Association for the Advancement of Science, described Darwin's achievement of returning the atomist philosophical tradition to dominance (Ayala 2007) in the clearest of possible terms:

Darwin's greatest contribution to science is that he completed the Copernican Revolution by drawing out for biology the notion of nature as a system of matter in motion governed by natural laws. With Darwin's discovery of natural selection, the origin and adaptations of organisms were brought into the realm of science. The adaptive features of organisms could now be explained, like the phenomena of the inanimate world, as the result of natural processes, without recourse to an intelligent designer.

Over the next century, biologists combined Darwin's theory with genetics and population genetics to form Neo-Darwinism, also known as the Modern Synthesis. In the following decades, the theory was widely accepted to explain away all the evidence for design in life as mere illusion. This belief, however, is becoming increasingly untenable in light of developments in the biological sciences over the past several decades.

Editor's Note: What we see in biology today are living systems which are far too complex and interdependent to have ever come into being by random chance. They look designed because they were designed by someone far more intelligent than ourselves. Further, science today is showing us that most of the variation we see in nature is not pushed along by natural selection which is increasingly being shown to be a weak and almost irrelevant force in nature, but that most adaptation occurs in preprogrammed responses in the genomes of every living system. This is God's signature in His Creations!

Genesis Commentary

The Death of Abraham

²⁵ Abraham had taken another wife, whose name was Keturah. ² She bore him Zimran, Jokshan, Medan, Midian, Ishbak and Shuah. ³ Jokshan was the father of Sheba and Dedan; the descendants of Dedan were the Ashurites, the Letushites and the Leummites. ⁴ The sons of Midian were Ephah, Epher, Hanok, Abida and Eldaah. All these were descendants of Keturah.

⁵ Abraham left everything he owned to Isaac. ⁶ But while he was still living, he gave gifts to the sons of his concubines and sent them away from his son Isaac to the land of the east.

⁷ Abraham lived a hundred and seventy-five years. ⁸ Then Abraham breathed his last and died at a good old age, an old man and full of years; and he was gathered to his people. ⁹ His sons Isaac and Ishmael buried him in the cave of Machpelah near Mamre, in the field of Ephron son of Zohar the Hittite, ¹⁰ the field Abraham had bought from the Hittites. There Abraham was buried with his wife Sarah. ¹¹ After Abraham's death, God blessed his son Isaac, who then lived near Beer Lahai Roi.

Isaac will be the son who carries forward the Hebrew lineage which are God's covenant people. Note Abraham's living to 175 years as he lives near the end of the transition. From the pre-flood patriarchs who lived in excess of 900 years and our modern life spans of less than 120 years. As noted, before, this transition was caused by the genomic bottleneck caused by starting humanity over with just the three sons of Noah and their wives and the carrying forward of the genetic load built into each of these couples. Abraham who lived some 400 years or more after the flood is showing the tail end of this transition caused by our ever-increasing mutational genetic load.

Ishmael's Sons

¹² This is the account of the family line of Abraham's son Ishmael, whom Sarah's slave, Hagar the Egyptian, bore to Abraham.

¹³ These are the names of the sons of Ishmael, listed in the order of their birth: Nebaioth the firstborn of Ishmael, Kedar, Adbeel, Mibsam, ¹⁴ Mishma, Dumah, Massa, ¹⁵ Hadad, Tema, Jetur, Naphish and Kedemah. ¹⁶ These were the sons of Ishmael, and these are the names of the twelve tribal rulers according to their settlements and camps. ¹⁷ Ishmael lived a hundred and thirty-seven years. He breathed his last and died, and he was gathered to his people. ¹⁸ His descendants settled in the area from Havilah to Shur, near the eastern border of Egypt, as you go toward Ashur. And they lived in hostility toward all the tribes related to them.

Ishmael was the first son of Abraham. His mother was the Egyptian Hagar (Genesis 16:3). Jewish, Christian and Islamic traditions consider Ishmael to be the ancestor of the Ishmaelites (Hagarenes or Arabs) and patriarch of Qaydār (nomads). Thus, out of this line comes Muslims (Ishmael is considered a prophet in Islam) and a host of Arab tribes which have been hostile to Israel throughout history and to this day.

Prayer Needs and Praises!

- **Pray for spiritual healing in our nation.**
- **Pray for SABBSA's Public Seminars**
- **Pray for our Radio Ministry**
- **Pray for our effectiveness of monthly meetings and speakers**
- **Pray for how we can get the gospel out better**
- **Please pray for Mrs. Cindy Williams who is again battling cancer.**



Coming to SABBSA on the second Tuesday of each month in 2023

July – **Dinosaurs and the Bible**

August – **The Discovery of Genesis in Chinese**

September – **Supposed Contradictions in the Bible?**

October – **“The Rocks Cry Out” #7 – “Science is a Tool”**

November – **“Discovering Dinosaurs” with Dr. Brian Thomas ICR**

December – **“The Rocks Cry Out” #8 – “Grand Canyon”**



SABBSA on KSLR

Please join the **San Antonio Bible Based Science Association** "on the air" each Saturday afternoon with "**Believing the Bible!**" Join us **Saturday afternoons at 1:45 pm on radio station KSLR 630 AM** in San Antonio and airing for 13-million people across the U.S. in thirteen major markets and internationally in 120 countries on WWCR.

Here is our schedule of upcoming program topics

7/8 **Bruce Malone #3 – The AWE of God**
7/15 **Errors in the Bible?**
7/22 **Biblical Prophecies of Christ**
7/29 **Am I an Alien?**
8/5 **Bendewald - Awakening book**
8/12 **Creation Accounts**
8/19 **Bedbugs**
8/26 **Am I a Mutant?**
9/2 **Youth Questions**
9/9 **What are the Darwinists Afraid of?**



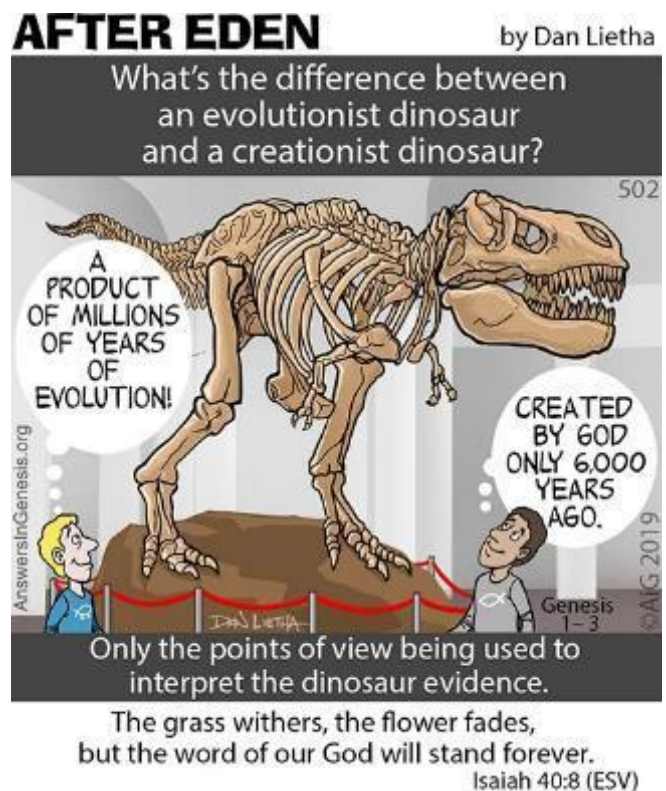
9/16 **Science in the Bible?**
9/23 **Whale Evolution**
9/30 **Young Moons**
10/7 **Quotes from Evolutionists #1**
10/14 **Quotes from Evolutionists #2**
10/21 **Is the Earth Special?**
10/28 **We came from Ape-men?**
11/4 **Distant Starlight**

If you cannot tune in on Saturday afternoons or would like to sample our program or hear previous shows, they are available on podcast on the KSLR website (kslr.com). Click on the link below to go to the KSLR podcast page and scroll down till you find "**Believing the Bible.**"

["Believing the Bible" - SABBSA on KSLR Radio](#)

Cartoon Corner

Thanks to Answers in Genesis, who provides many of these cartoons each month for our newsletter and our presentations. Please think about donating to them in gratitude for this and all the ministries they give us.



Summer Long Creation Seminar at Crestview Baptist Church

Scott Lane will present a complete Creation Science seminar on Wednesdays at 6:30 pm this summer at Crestview Baptist Church (located at **8101 Eagle Crest Blvd., Windcrest, TX 78239**). All This seminar is open to the public and childcare is provided. The schedule for this summer's seminar presentations are as follows:

- 7/5 **Underpinnings: Fossils, Physics, Genetics and Babel**
- 7/12 **Young Earth Evidence**
- 7/19 **Incredible Creatures that Defy Evolution - Intelligent Design**
- 7/26 **Dinosaurs and the Bible**
- 8/2 **Biology and Symbiotic Relationships**
- 8/9 **Lucy Unveiled and Bad Examples of Evolution**
- 8/16 **How did we get Here? – The De-faithing of America**



If you miss one of the seminar programs this summer or wish to preview each week's material, they are on **YouTube** and linked on SABBSA's website at www.sabbsa.org

Around Texas

Houston:

The **Greater Houston Creation Association (GHCA)** meet at Houston's First Baptist Church at 7 pm every first Thursday, in Room 143. Their meetings can be streamed live by going to www.ghcaonline.com.

Dallas-Ft Worth:

The Metroplex Institute of Origin Science (MIOS) meets at the Dr. Pepper Starcenter, 12700 N. Stemmons Fwy, Farmers Branch, TX, usually at 7:30 pm on the first Tuesday of each month. <http://dfw-mios.com/>

Greater San Antonio area: Listen to **Answers with Ken Ham** online at the address below.

<http://www.answersingenesis.org/media/audio/answers-daily> To hear creation audio programs from the

Institute for Creation Research, listen online at this address. <http://www.icr.org/radio/> Also, tune in KHCB FM 88.5 (San Marcos) or KKER FM 88.7 (Kerrville) for **Back to Genesis** at 8:57 AM Mon-Fri, then **Science, Scripture and Salvation** at 1:30 AM, 8:00 AM and 4:30 PM on Saturdays.

Glen Rose:

Dr. Carl Baugh gives a **"Director's Lecture Series"** on the first Saturday of each month at the **Creation Evidence Museum** just outside Glen Rose, TX. This museum is also a great and beneficial way to spend any day. Presentations are at 11 am and 2 pm. For more information, go to www.creationevidence.org

Dallas:

The Museum of Earth History uses the highest quality research replicas of dinosaurs, mammals, and authentic historical artifacts to not only lay out for the visitor a clear and easily understood connection between Genesis and Revelation but will do so in an entertaining and intellectually challenging way. Open M-F 9 to 6.

<http://visitcreation.org/item/museum-of-earth-history-dallas-tx/>

ICR in Dallas:

Of course, the **ICR Discovery Center for Science and Earth History** is the foremost creation history museum in the Southwest. They are open from 10am to 5 pm Tuesdays through Saturdays. For more information on this exceptional facility go to <https://discoverycenter.icr.org/>

Dallas-Ft Worth:

The Metroplex Institute of Origin Science (MIOS) meets at the Dr. Pepper Starcenter, 12700 N. Stemmons Fwy, Farmers Branch, TX, usually at 7:30 pm on the first Tuesday of each month. <http://dfw-mios.com/>

Abilene:

The Discovery Center is a creation museum/emporium that exists primarily to provide scientific and historic evidence for the truthfulness of God's word, especially as it relates to the creation/evolution issue. It also features some fascinating "Titanic Disaster" exhibits. <https://evidences.org/>

Last Month at SABBSA Genetics and the Bible

This presentation started with a **"DNA 101 Course"** for the uninitiated. It covered most of the information with creationist implications in the field of genetics. It included data from: the Human Genome Project; ENCODE Project; ICR's "Species Project"; and the work of former Cornell University genetics professor, **Dr. John Sanford**.



It revealed the complexity of how information is coded in the genome, and how this shows it could not have occurred by chance. Dr. Sanford's work reveals how his study of genetics has led him to the conclusion that evolution is impossible at the genetic level and how natural selection is a woefully inadequate process for allowing evolution to occur. **This presentation included the latest research dispelling myths about Human and Chimp DNA from Dr. Jeffrey Tompkins with ICR.**

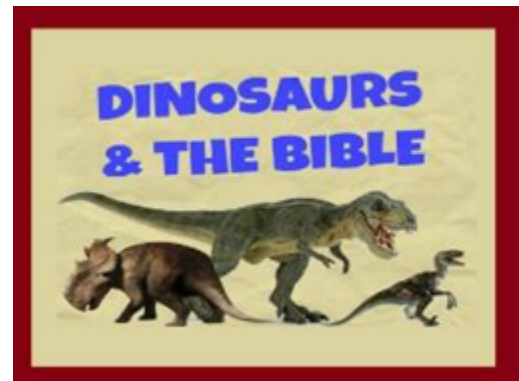
If you missed our last meeting its on YouTube at <https://youtu.be/oifhf5wZ5hM>

Next SABBSA Meeting: Tuesday, July 11, 2023, at 7 pm

Coming to SABBSA in July

Most people are taken aback by this title. Don't be, we are talking about real history.

We will see accounts from the Bible of encounters of man with dinosaurs like the Brachiosaurus and the Plesiosaur. We show evidence for both the lack of "missing links" between dinosaur kinds and the incredibly weak evidence for the supposed evolution of dinosaurs into birds. We will see how Noah could have taken dinosaurs onto the Ark.



The vast dinosaur graveyards found round the world give great evidence for this deluge and how the bulk of all life on Earth died in it. We will show evidence from South America and around the world showing man lived with dinosaurs very recently. All of this evidence is shown to fit within the creation account from the Bible. This is our most popular program with kids and for schools.

Please join us in July for creation science and biblical apologetics teaching you will find nowhere else in Bexar County. We meet at **Faith Lutheran Church** just **south of the corner of Jones Maltsberger and Thousand Oaks**. The address is 14819 Jones Maltsberger Rd., San Antonio, Texas 78247.