

Communique'

President - Scott Lane 599-7240 Vice President – Ed Salzwedel
Secretary – Clarence Johnson Treasurer – Carl Williams, M.D.
[website – www.sabbsa.org] [P.O. Box 34478, San Antonio, TX 78265]

March 2021

We hope and pray that all of you withstood and got through our unprecedented bout with subfreezing temperatures last month. Unbelievably, there are a few that are already saying this event (which seems to recur in some form about every 30+ years in Texas) was due to Global Warming. Our meeting last month not only predicted this ridiculous response, but showed the bankrupt nature of the current “Green Religion.”

Our first article in this month’s **Communique'** shows how every reproductive system on earth testifies to the brilliance and existence of the Creator! Our second article on the “**Clarity of Scripture**” assures us that we can take God’s words literally, and that they were specifically designed so that we could understand them. This article also gives us a nice lead into this month’s video presentation.

Our program at our monthly meeting in March is **DNA Battles: Were Adam and Eve Historical?** This is the first in a series of video documentaries we will see over the next few months from **Evidence Press**. They brought us the quality production of **Echoes of the Jurassic** we saw a couple of years ago.

Our **Genesis Commentary** section has returned this month, which we hope edifies you. As always, we have a full rundown of all creation education opportunities coming up in our area. We pray you are enlightened and encouraged by this newsletter.

Testaments to the Miracles of God’s Designs

Each and every part of any animal’s reproduction system is a miraculous and intricate design from God. In a human mother’s womb, the baby has a blood placental barrier which separates the baby’s blood flow and the mothers, by the placenta. The baby’s hemoglobin is specifically designed to have many times the affinity for oxygen than the adult mothers. Thus, when the blood of the mother and baby pass each other on either side of the barrier, the oxygen in the mother’s hemoglobin is attracted away from her blood cells, and through the barrier by this greater attraction of the baby’s hemoglobin.

This placental blood barrier design not only allows for this exchange, but since the two blood streams do not mix in this way, the baby is protected from most toxins, bacteria, and other foreign substances in the mother’s blood. Just as importantly, this design feature keeps the mother’s immune system from attacking the baby as a foreign invader. (www.sciencedirect.com/topics/immunology-and-microbiology/blood-placenta-barrier)

The Fetal Circulatory Arrangement (from [Made in His Image: Baby's First Breath | The Institute for Creation Research \(icr.org\)](https://www.icr.org/article/10000) by Dr. Randy Guluizza)

For a baby in the womb, almost everything about those vital (respiration) functions is just the opposite for one important reason: the baby develops fully functional lungs that are yet inactive for oxygen exchange. Consequently, in order for a baby to survive, three major structural differences must exist that enable life in his temporary home.

First, the baby must have a substitute lung. A pretty tall order for even brilliant biomedical engineers. The placenta, a remarkable organ, has a brief existence, but it fulfills a myriad of vital functions (as we have already described three). But, it's especially as the fetal lung and kidney. Second, the circuit to the lungs must be bypassed, so vessels must change to allow this temporary detour. (A new route that detours around a circuit is called a shunt.) Third, blood vessels must not only connect placenta to baby, but also inside from the point of attachment to normal vessels that lead to and from the heart. The umbilical cord meets the need for a placental-fetal connection, with one large-diameter vein and two smaller arteries. Inside the baby, these continue as the umbilical vein and umbilical arteries.

The umbilical vein carries oxygen-rich blood toward the heart. At a spot next to the liver, it connects to a large vein carrying less-oxygenated blood back to the heart. Interestingly, the two combined streams of blood do not tend to mix. It just happens that when they reach the right atrium, the more oxygenated blood stream is adjacent to a temporary opening in the septum, where it passes through to the left atrium because the blood pressure in the right side of baby's heart is higher than the left side--the opposite of the post-birth situation. The right heart still pumps blood to the lungs, but because the lungs have not yet expanded, the resistance to blood flow is very high and, therefore, the pressure is high. Some blood does make it to the right ventricle (about 10 percent) and flows through the lungs, which is the right amount to meet metabolic needs, but not for oxygen-carrying purpose--which does not yet exist.

The temporary opening has a piece of septum tissue over it that is located in the left atrium. Thus, it acts like a "trap door" valve so that high pressure on the right side can push it open with each beat. In adults, it would make no sense for the artery carrying oxygen-poor blood to the lungs to connect by a big blood vessel to the artery carrying oxygen-rich blood (the aorta) to the body. But the baby does have this big connecting vessel in order to bypass the lungs and send oxygen-rich blood from the placenta to the body. Most of this blood travels to the part of the body with the highest oxygen demands, the growing brain.

So baby is content in the womb with temporary umbilical arteries and vein, a temporary opening in the septum, the temporary pulmonary artery-aorta shunt vessel, high pressure in the lungs and right side of the heart, and low pressure on the left side. With the onset of labor, culminating in delivery, that world is set to radically change. However, crucial mechanisms are **built into** the temporary structures that enable a safe transition out of the womb.

Vital Circulatory Changes Occurring at Birth

The umbilical cord vessels have features that respond to changes in quantities of oxygen dissolved in blood, stretching, substances commonly called adrenaline, and trauma. Obviously, during delivery and the severing of the cord all of these are present. The cord, which has an unusually strong muscle layer surrounding the vessels, reacts with a rapid and powerful constriction of the arteries and vein that is complete in less than a minute. This stops blood flow to and from the placenta, which has two effects. It greatly reduces the risk of either baby or mom losing a lot of blood and also causes an immediate drop in the amount of oxygen baby is getting.

Very sensitive sensors inside certain blood vessels measuring carbon dioxide content, and also on the skin detecting temperature drops stimulate the nervous system's breathing center. Under normal circumstances,

increased carbon dioxide blood levels coupled with decreased body temperature after exiting the birth canal trigger an irresistible urge for baby to take a strong breath and inflate his lungs for the first time. The lungs have been prepared for this event by special cells producing a compound called surfactant, which significantly reduces the tension holding non-inflated lung tissues together. Otherwise, forces required to open the lungs would be too high for almost all newborns to accomplish. Once inflated, pressures necessary to pump blood through the lungs drop 90 percent from their intra-womb high values.

Thus, pressure in the right side of the heart immediately drops well below the pressure in the left side. The "trap door" valve (actually two flaps of skin that neatly fold and interlock when pushed together) covering the septum's temporary opening in the left atrium is pressured shut. Cells begin to grow over the edges of the valve, fusing it to the septum. Less than a minute after birth, signals from baby's nervous system cause strong sphincter muscles to close off the umbilical vein where it attaches near the liver and also close off the temporary pulmonary artery-aorta shunt. (That large vessel permanently closes over the next one to two days.)

The baby's body has started all changes (in respiratory and circulatory functions) that continue through adulthood. During the next year, those internal umbilical vein and arteries transform from blood vessels into stabilizing ligaments. So, in the one critical minute after delivery, the baby's body has initiated actual structural changes enabling it to survive in its radically different environment with all temporary vessels, shunts, and openings functionally closed in the first 30 minutes.

Conclusion

The reality of fetal to newborn circulatory changes is this: structures indispensable for life in the womb are incompatible with life out of it, and at birth all structures are rapidly reversed, resulting in the opposite effect on survival. In either case, if the offspring dies, evolution ends. Darwin wrote, "If it could be demonstrated that any complex organ existed which could not possibly have been formed by numerous, successive, slight modifications, my theory would absolutely break down."

Consider it broken...if not a catastrophic failure. Why? Given that a transplanted heart living inside someone is truly an incredible achievement, at what level of accomplishment is getting a whole person to live inside another person? Absolutely incredible--which is what the Lord Jesus Christ is! As clearly seen, He creates, He directs, He provides, He cares! Indeed, everything He does is beautiful beyond description.

The Strange and Miraculous Design of Seahorse Reproduction

How could there be any parallel between human reproduction and seahorses, which famously have the mother lay her eggs in the male's pouch to be incubated to birth?

A seahorse mating pair entwine their tails, and the female aligns a long tube called an ovipositor with the male's pouch. The eggs move through the tube into the male's pouch where he then fertilizes them. The embryos develop in ten days to six weeks, depending on species and water conditions.

Research has now found processes in seahorse reproduction which are amazingly parallel to human reproduction. It has been recently discovered that the male pouch does not simply act as a holding sack, and an incubator. But it acts more like a womb in providing nutrients, gas exchange, protection from diseases and removal of wastes. Further, as the babies move toward the release date, the males pouch changes the environment in the pouch from one of pure nutrients, warm temperatures, and supportive fluid, to an environment like the seawater they will soon be released into, so that they do not die from the shock of being thrust into this new environment.

Thus, we find that much like the mistaken idea throughout much of human history, that it was only the males' seed which was incubated inside a woman, and that she lent nothing to the mating besides a warm incubator; the seahorse's pouch is much more than just a carrying sack. Like the female humans' womb, it has been specifically designed to carry out functions to grow and support the development of the seahorse eggs, all the way from being laid, to the time of release. If all of these functions of the seahorse males' pouch are not in place to fertilize, feed, oxygenate, provide protective antibodies, remove wastes products and transition the babies into the outside environment safely, then there would have been no future generations of seahorses.

According to a University of Sydney press release, "male seahorses' gene expression during pregnancy was similar to that of humans." It also indicated that similar genes were involved.

Evolutionists say that "Viviparity (live birth) has evolved more than 150 times in vertebrates" (from the paper Molecular Biology in Evolution / doi:0.1093/molbev/msv177). They admit that that this is an extreme example of "homoplasy". Homoplasy refers to similarities in organisms which cannot be attributed to, or explained via common ancestry (evolution). Evolutionists would argue that this is just another example of convergent evolution, where nature evolved along the same lines in completely different lines of ancestry. (Creation / Vol. 38, No. 1, 2016, p. 7) Such comments are pure foolishness, and expose the evolutionary hypothesis for how bankrupt its thesis is.

Mosquito eggs (Excerpted from an article by Scott Arledge in the March issue of ICR's Acts & Facts)

Mosquitoes hatch from tiny eggs and spend a few days filter-feeding on things like bacteria, pollen, and algae. They molt three times as they grow, storing up the energy reserves needed to pupate in a manner similar to a butterfly. Their "chrysalis" has a shrimp-like tail that enables them to swim while they morph into a flying insect... Complex? Yes. So, let's take a look at just the egg. It's not a simple shell. What we find is an exquisitely designed life-preserving environmental interface system.

An *Aedes aegypti* mosquito lays eggs right above the waterline on a moist surface. The embryo can survive in the egg an **astounding five years** while it waits for the right conditions.¹ How does the embryo survive harsh environments, and hatch only when conditions are ideal? It's due to the brilliant design of the mosquito egg.

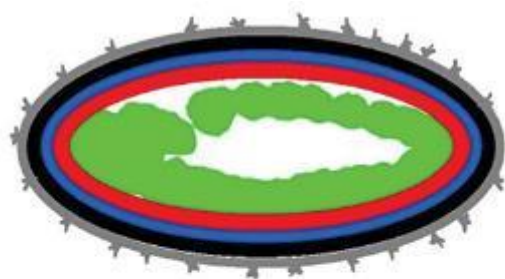


Figure 1. Cross-section drawing of the structure of an embryo and four-layer egg covering

Image credit: Copyright © 2008 Rezende et al; licensee BioMed Central Ltd. Used in accordance with federal copyright (fair use doctrine) law. Usage does not imply endorsement of copyright holder.

The eggshell isn't a single layer but actually four (Figure 1). The outer two layers—exochorion, endochorion, and the air gap they create—keep the embryo from running out of oxygen even if the egg is completely submerged. The outer layer, exochorion, is a hydrofuge—it sheds water like a duck's back.

This egg is also covered with a beautiful micropattern of bumps called *tubercles* (Figure 2 – next page). These tubercles increase the surface area of the exochorion exposed to the surrounding water and act as a gill, enabling the egg to "breathe" by gas exchange from dissolved gases present in the water.² These bumps also resist biofouling (clogging) because of their special hexagonal micropattern. This has inspired the design of new technology to utilize this ingenious effect...

The egg first starts out with only the outer two layers. The embryo inside is preprogrammed to wait for some important processes to finish, and then excretes a jelly-like serosa membrane that completely surrounds the

embryo.³ This membrane then secretes a cuticle containing chitin that allows just the right amount of water to leave the egg, while retaining moisture inside. The eggshell also has a brown pigment called *melanin*. It's still a mystery how the melanin, also found in human skin, reduces water leaving the egg, but these two features masterfully work together so the embryo doesn't dry up and die.

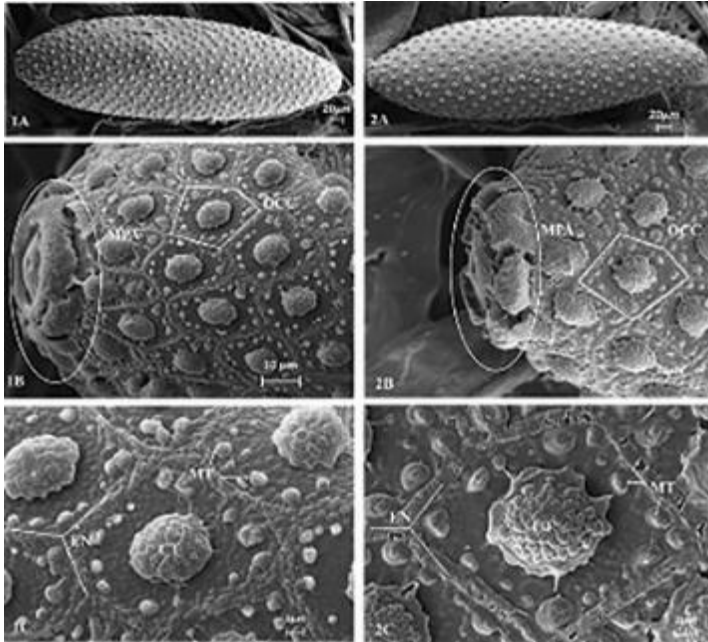


Figure 2. *Mosquito eggs possess tubercles that increase the surface area and aid the outer layers' gill-like function*

Image credit: Copyright © 2020 The Entomological Society of Korea and John Wiley & Sons Australia, Ltd. Used in accordance with federal copyright (fair use doctrine) law. Usage does not imply endorsement of copyright holder.

The embryo doesn't simply mature and then hatch. It waits for just the right condition—namely, low levels of oxygen in the water. This is important for the diet of a newly hatched mosquito, which consists of bacteria and algae. The presence of both these micronutrients drastically reduces the oxygen level in water. When there are sufficient levels of this food, as indicated by low oxygen, the mosquito hatches and consumes the bacteria and algae. This is especially beneficial for other aquatic life that needs oxygen to survive.

Things seem complicated as we observe creation all around us, but if we take the time to zoom in on the details, we find even more mind-boggling complexity. This explanation of the mosquito egg is a very simplified version, but it nonetheless demonstrates the great artistry and engineering of our Creator and Savior, Jesus Christ! The same One who created us and provides us the path to salvation.

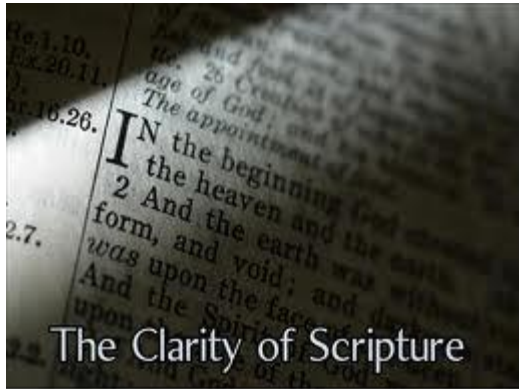
The human reproduction system has two amazingly body plans that allow the baby to first develop in an amniotic environment, and then transition to an air breathing organism in a matter of seconds. The many steps described in this process from a water creature, to an air breathing creature, show that this could not have occurred via haphazard evolutionary steps, but had to be complete and functional from the start, or there would be no future generations of humans. Likewise, the amazingly intricate design of the seahorse reproductive system shows this same evidence of having to be complete and fully functional from the start, as does mosquito development.

When we examine the reproductive system of humans by itself, we see incredible evidence of a designer. The seahorse's reproductive system shows another unique design, which could not in any way have happened by chance. Further, the amazingly complex designs of mosquito eggs, its chrysalis and multi-phased development cycles all testify not only to the Creator's brilliant ingenuity, but to the foolishness of anyone saying this incredibly complex set of systems all occurred by chance! But remember that evolutionists have now identified as many as 150 other times just in vertebrates where their theory says that such intricately designed reproduction systems evolved independently. Thus, they claim that such miracles of design happened not just once in humans, or twice in seahorses, or thrice in mosquitos, but more than a hundred fifty times. The faith of their religion is strong, but their scientific evidence is weak. The reproductive cycles we have shown, and the design of these creatures described testify, and glorify the work of the Creator God!

References

1. Mayilsamy, M. 2019. Extremely Long Viability of *Aedes aegypti* (Diptera: Culicidae) Eggs Stored Under Normal Room Condition. *Journal of Medical Entomology*. 56 (3): 878-880.
2. Kim, H. et al. 2020. Structural characterization of the micropatterned egg plastron in the mosquito, *Aedes albopictus*. *Entomological Research*. 50 (4): 189-198.
3. Rezende, G. L. et al. 2008. [Embryonic desiccation resistance in *Aedes aegypti*: presumptive role of the chitinized Serosal Cuticle](#). *BMC Developmental Biology*. 8 (1): 82.

Our Dependence on the Clarity of Scripture



Our ministry, the ability of the lost to understand God's message and to get saved through God's word, and our ability to understand how God wants us to live, are all dependent on the precept that God would make the Bible intentionally clear for anyone to understand its meanings. There are those who will reject its simple meanings, such as Isaac Asimov in his critique of the Bible. There he rightly interpreted that Genesis 1 says that the Earth was created in six 24-hour days, but he evaluates that as craziness! As the Bible says, its words were made for anyone to grasp, but the unbeliever will find them to be "foolishness!"

There have been many attempts by different people and groups over the ages to try and say that you had to have special interpretations from an intermediary to understand the Bible. The Catholic Church for centuries would not allow the Bible to be translated into English for fear of losing the stranglehold control its clergy had over society. This situation left everyone's understanding of the Bible in the hands of the Catholic priests. This led to the imposition of many nonbiblical interpretations and practices such as the priest being an intermediary before God, buying indulgences, buying a relative's way out of purgatory, the concept of limbo, and many others. Today many Catholics will refer not to the Bible for their theological interpretations, but instead to their "Catholic Book" which communicates the Catholic Church's stance on biblical interpretations.

Mary Baker Eddy said that you could only interpret scripture correctly with her inspired guidance, which she gave to the world in her book "Science and Health with Keys to the Scriptures." Her interpretations led to the formation of cult "The Church of Christ Scientist" in 1879 in New England, which we call "Christian Scientists" today. Through her misinterpretations of scripture, her followers get such misconceptions as that all of reality is just a dream in God's mind. Neither you, or me, or that chair you're seated in are real. Thus, don't go to a doctor if your child is sick, just pray for God to change His dream, which ostensibly would change our reality!

The "Stone-Campbell" movement led by Alexander Campbell in the 1830's told its followers that you had to take all scripture absolutely literally, and add nothing to it. On the surface this sounds good except when you see how followers of his in the Church of Christ and other sects have taken this to mean no musical instruments allowed in church, weekly communion required of all believers, baptism interpreted as a sacrament rather than an ordinance, and many more differences from other denominations. Thus, you again see how a group can be affected when they give up the theology of the "priesthood of the believer" (a tenant of the Reformation), and turn over interpretation of scripture to someone else.

God never intended for it to be done in this way. God made scripture for all to easily understand if they are literate, and have a good Bible translation. This God intended clarity of scripture and its

designed ability to be understood by the general public is called in theological circles the “perspicuity of scripture.”

Too often today the new interpreter of scripture is said to be modern science. We see people who try and explain that Genesis 1 actually leaves open that each “day” of creation is actually an allegory for an epoch of perhaps a billion years. This is done in spite of the fact that any competent Hebraist will tell you that Genesis 1 communicates clearly in historical prose (not allegory) that each day was a literal 24-hour day.

Other modernists will tell you that science has proven that there were no such people as an original Adam and Eve. They say the mention of them in scripture is just a moral story told to us since we were not developed enough scientifically or culturally for the truth. However, science has proven no such thing. The actual science on the matter shows that Adam and Eve were real historical people, with no hominid ancestry before them. This deep truth is the subject of this month’s video presentation at our SABBSA meeting on March 9th. We invite you to attend.

Male “Y-Chromosome” evidence shows that we all came from one primordial male (which the Bible called Adam). Female Mitochondrial DNA shows that we all came from one initial female, which the Bible identifies as Eve (meaning the “The Mother of all Living” as Adam called her).

God through the apostle Paul in II Timothy 3:16-17 said, “All **Scripture** is God-breathed and is useful for teaching, rebuking, correcting and training in righteousness, so that the servant of God may be thoroughly equipped for every good work.” Psalm 119 preaches this truth of the understandability and utility of scripture in great depth.

The creationist, the clergy, and every day Christian do not need to filter the Bible through everything science currently believes (which changes with time). Instead, we need to reverse that order and check everything we believe about the universe by first checking that our scientific beliefs are consistent with scripture. God made the Bible to be readily understood by its audience, us. The great scientists of the past have learned much by taking scripture literally, and honoring its face value meanings. We, like them, need to have confidence that scripture can be readily understood by us, with even deeper meanings given to us through scripture via the guidance of the Holy Spirit. We need never check the Bible with science, or any other interpreter. Instead, we should be checking our views of what reality is, by what is clearly communicated to us in God’s Holy Words!

Genesis Commentary

⁶ Noah was six hundred years old when the flood of waters came upon the earth. ⁷

Noah was five hundred when instructed to build the ark and is now six hundred years old, so construction of the ark took 100 years or less.

⁷ And Noah and his sons and his wife and his sons' wives with him went into the ark to escape the waters of the flood. (Just as previously discussed mitochondrial DNA data supports) ⁸ Of clean animals, and of animals that are not clean, and of birds, and of everything that creeps on the ground, ⁹ two and two, male and female, went into the ark with Noah, as God had commanded Noah. ¹⁰ And after seven days the waters of the flood came upon the earth.

Seven is a godly number and one God often uses in the Bible and His operations reminding us of the completion of His creation. After those seven days, the destruction of the creation begins.

¹¹ In the six hundredth year of Noah's life, in the second month, on the seventeenth day of the month, on that day all the fountains of the great deep burst forth, and the windows of the heavens were opened. ¹² And rain fell upon the earth forty days and forty nights. ("Forty is another godly number.)

As the article we shared in Genesis chapter 2 commentary shows, there is still a remnant of these waters of the "great deep." There is a region of the earth's mantle between 160 miles and 420 miles below the surface of the earth which contains **three and a half times more water** than all the water which covers the face of the earth. It is mostly inside a porous rock structure called "ringwoodite", which operates like a sponge under the temperatures and pressures at that depth. Dr. Brown and others theorize that the waters of the great deep at the time of the pre-flood actually had a sea of water just above this ringwoodite on which the continents actually floated, allowing for the quick gush of waters to the surface once intensive volcanism ensued with the flood. This allowed the continents to rapidly move during the flood without incurring the huge amount of heat calculated by standard continental drift occurring at vastly accelerated rates.

Creationists at this time are very split on the "windows of heavens opened." The traditional creationist answer was that this was the precipitation of the water canopy, which then existed above the atmosphere, and was caused to rain down upon the earth by a meteor shower or some other godlike intervention. Current creationist research shows this canopy of water vapor could not have existed above the atmosphere unless its composition was an extremely rare one. It would have had to have been composed of water and metalloids allowing it to float not on top of the atmosphere, causing deleterious heat and barometric pressure on the earth, but instead floated within the earth's much stronger at the time magnetic field.

Current creationist thought by many is that the "windows of heaven" were great rains brought on by the huge amount of water, aerosols and particulates thrust high into the atmosphere by the huge volcanism of this time (particularly in the opening of the mid-Pacific rift) including the spewing of prodigious amounts of water from the underground sea. This so loaded the atmosphere with vast stores of rain forming water vapor and particulates that the earth's atmosphere could do nothing else but rain till the continual feed of water vapor and particulates from this planet encompassing, mantle splitting volcanism subsided to allow hydrologic equilibrium to be restored.

What this "windows of heaven" does not refer to is a false biblical view that the sky is actually solid, and that windows in that solid sky were opened in heaven for rain to be poured down on the earth. This is a whimsical and false view promoted from a reading of the Greek Septuagint, and fostered by a Greek/Egyptian view of the cosmos at the time of the Septuagint's writing in 250 BC.

¹³ On the very same day Noah and his sons, Shem and Ham and Japheth, and Noah's wife and the three wives of his sons with them entered the ark, ¹⁴ they and every beast, according to its kind, and all the livestock according to their kinds, and every creeping thing that creeps on the earth, according to its kind, and every bird, according to its kind, every winged creature. ¹⁵ They went into the ark with Noah, two and two of all flesh in which there was the breath of life. ¹⁶ And those that entered, male and female of all flesh, went in as God had commanded him. And the LORD shut him in.

Note, it was God who shut the one door to the ark. This is very reminiscent and not accidentally so of our condition of sin and salvation on the earth. Noah had spent one hundred years begging the people of earth to turn to God, join him, and be saved on the ark. They refused, and once God closed that door and locked everyone else out, their fates were sealed. They could not change their fates once the reality of the flood was upon them.

Likewise, we all have the choice in life of following God and declaring Christ as our savior, or not doing so. We either take that step of faith and are preserved in the afterlife, or die not knowing Christ and are doomed with no recourse once the reality of the afterlife confronts us after death. Death closes for us that door, just as it did on the Ark.

¹⁷ The flood continued forty days on the earth. The waters increased and bore up the ark, and it rose high above the earth. ¹⁸ The waters prevailed and increased greatly on the earth, and the ark floated on the face of the waters. ¹⁹ And the waters prevailed so mightily on the earth that all the high mountains under the whole heaven were covered. ²⁰ The waters prevailed above the mountains, covering them fifteen cubits^[a] deep. (15 cubits would equal at least 22 feet using the ancient “short cubit”.)

There are two misconceptions about the flood of Noah’s day. First, is that this was a tranquil flood event. However, we’ve all seen accounts of how violent local flooding can destroy whole cities. This Genesis flood account is of an exponentially grander scale, with more violent water destruction than any other flood ever seen on the earth, and far beyond anything we experience today. Not only would the men and animals be drowned, and the cities wiped out, but the huge force of these waters would scrape the ground and strip rock layers of the earth clean all the way down to bedrock. This occurrence is testified to by the archaeological feature of the “Great Discontinuity” found at the bottom of all sedimentary layers across the whole earth. This feature shows a smooth layer of solid basalts and granites below miles of sedimentary layers carried and deposited by the flood above. The Ark, as we gave evidence before in our “Supertankers in the Bible” article, was specifically designed with the most perfect length to width ratio to make it able to stay afloat in such tumultuous conditions.

Second, these scriptures cannot be explained as describing a local flood in the Black Sea region, as some have proposed, saying there never was a worldwide flood. If God was to bring only a local flood, then you don’t tell Noah and the animals to build an ark, but just move away from the Middle East! This is a far easier answer than spending 100 years to build the greatest life raft in history!

Also, if you support the idea of a local flood, you are then saying the Bible’s statement of all the mountains of the world were covered to a “depth of fifteen cubits” is a contradictory error in scripture. As the ridiculous picture to the right shows, you cannot have a local flood which covers the highest mountains of the earth, and that flood be contained within a local area. This biblical statement, and the concept of a local flood are contradictory. One of them is wrong and the worldwide sedimentary deposits miles deep on the earth testify to this being a worldwide event, as the Bible says it was!



FEAST Science Workshops in 2021

For sixteen years **FEAST** and the **San Antonio Bible Based Science Association** (SABBSA) have partnered to bring the latest in science research and best in educational formats to FEAST families free of cost.

This year SABBSA, in partnership with FEAST and Creation Ministries International, is bringing a new full curriculum presentation called the **Genesis Academy**, that can only be purchased through **Creation Ministries International**. However, with special permission, CMI has allowed us to use this new series of classes as the FEAST Science Workshop Series for 2021! This online and video format is perfect for our COVID situation. This is an expensive curriculum, but thanks to the generous sponsorship of SABBSA by purchasing this curriculum for our use, we are able to offer these workshops free of charge for registered participants!

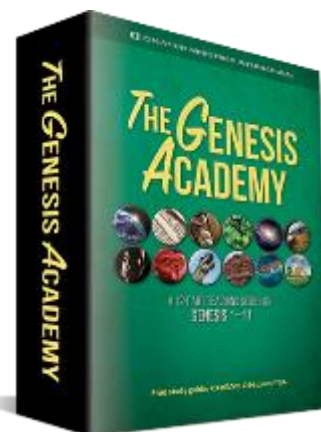
Registered participants will be sent a link and code upon registration enabling them at the beginning of each month to view the lessons at their own pace and on their own schedule. The 12-session Genesis Academy video lessons covering Genesis chapters 1 through 11 from both theological and creation science perspectives is provided to you with online distanced teaching. This teaching curriculum features a free online study guide with fillable worksheets you can use while watching the videos. We covered two lessons each during the months of September and October 2020 and will resume in January, February, March, and April of 2021 after taking off during the busy November and December holidays.

Live Support, Q & A and Discussions!

On the third Monday of each of these months, we will hold a 45-minute zoom meeting discussion session on the two videos viewed that month hosted by our friends at SABBSA.

Earn you Certificate!

A certificate recognizing your achievement and documenting your completion of the **Genesis Academy** is available. Students and/or families which download and use the free study guide to fill in all of the worksheets for each session qualify. In April 2021, send FEAST a copy of the filled in online sheets for the entire teaching curriculum or photos of their hard copies to qualify for a certificate of completion saying that you have successfully completed the Genesis Academy Curriculum!



2021 FEAST Science Workshop Schedule:

March - "The Pre-Flood World" and "Noah's Flood and Billions of Years"

April - "Noah's Flood and the Ark" and "The Post-Flood World"

Prayer Needs and Praises!

Relief for the world from COVID-19

Our medical professionals across the world.

Heal our nation from the civil unrest and violence in our cities.

Pray that our nation heals and comes together after this very divisive political period.

Pray for those still effected by the "The Freeze"



Coming to SABBSA on the second Tuesday of each month at Faith Lutheran Church

March - DNA Battles: Were Adam & Eve Historical?

April - Universe Battles: Big Bang or Big Design?

May - Earth Battles: How Old is It?

June - Testing Evolution: Exposing Flaws



SABBSA on KSLR

Please join the **San Antonio Bible Based Science Association** "on the air" each Saturday afternoon with **"Believing the Bible!"** Join us **Saturday afternoons at 1:45 pm on radio station KSLR 630 AM** in San Antonio and airing for 12-million people across the U.S. in 11 major markets and internationally in 120 countries on WWCR.

Here is our schedule of upcoming program topics-

3/6 Dr. Cserhati 2 - Genomics

3/13 Dr. Cserhati 3 - Neanderthals, Languages

3/20 Does COVID prove Evolution?

3/27 Racism and Cancel Culture

4/3 Is Evolution Science?

4/10 Man on the Street - Roman Villareal

4/17 Jim Bendewald - Evidence Press

4/24 DNA Battles and Universe Battles

5/1 Jim Bendewald - Earth Battles



5/8 The Haeckel Hoax

5/15 Can TNT Create Us?

5/22 John Pendleton - Pterodactyl

5/29 John Pendleton - Cuba and Central America

If you cannot tune in on Saturday afternoons, or would like to sample our program or hear previous shows, they are available on podcast on the KSLR website (kslr.com). Click on the link below to go to the KSLR podcast page and scroll down till you find **"Believing the Bible."**

"Believing the Bible" - SABBSA on KSLR Radio

Around Texas

Houston:

The **Greater Houston Creation Association (GHCA)** meets the first Thursday of each month. They normally meet at Houston's First Baptist Church at 7 pm, in Room 143. Their meetings can be streamed live! For more information, go to www.ghcaonline.com. (Due to COVID-19 current programs are online only).

Glen Rose:

Dr. Carl Baugh gives a “**Director’s Lecture Series**” on the first Saturday of each month at the Creation Evidence Museum just outside Glen Rose, TX. This museum is also a great and beneficial way to spend any day. Presentations are at 11 am and 2 pm. For more information, go to www.creationevidence.org

Dallas:

The Museum of Earth History uses the highest quality research replicas of dinosaurs, mammals, and authentic historical artifacts to not only lay out for the visitor a clear and easily understood connection between Genesis and Revelation, but will do so in an entertaining and intellectually challenging way. Open M-F 9 to 6.

<http://visitcreation.org/item/museum-of-earth-history-dallas-tx/>

Of course, the **ICR Discovery Center for Science and Earth History** open 10 am to 5 pm Monday thru Saturday is the foremost creation history museum in the Southwest. For information on this exceptional facility go to <https://discoverycenter.icr.org/>

Dallas-Ft Worth:

The Metroplex Institute of Origin Science (MIOS) meets at the Dr. Pepper Starcenter, 12700 N. Stemmons Fwy, Farmers Branch, TX, usually at 7:30 pm on the first Tuesday of each month. <http://dfw-mios.com/>

Abilene:

The Discovery Center is a creation museum/emporium that exists primarily to provide scientific and historic evidence for the truthfulness of God’s word, especially as it relates to the creation/evolution issue. It also features some fascinating “Titanic Disaster” exhibits. <https://evidences.org/>

Lubbock Area (Crosbyton):

All year: Consider a visit to the Mt. Blanco Fossil Museum, directed by Joe Taylor. The Museum is worth the visit if you live near or are traveling through the Panhandle near Lubbock. If you call ahead and time permitting, Joe has been known to give personal tours, especially to groups. For more information, visit <http://www.mtblanco.com/>.

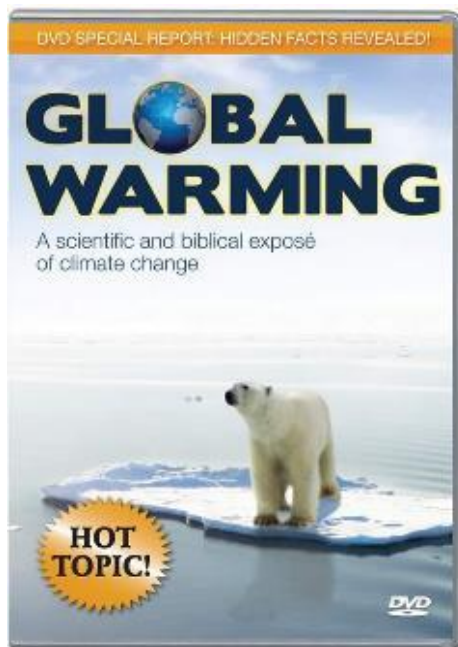
Greater San Antonio area: Listen to **Answers with Ken Ham** online at the address below. (No nearby station for this broadcast). <http://www.answersingenesis.org/media/audio/answers-daily> To hear creation audio programs from the **Institute for Creation Research**, listen online at this address. <http://www.icr.org/radio/> Also, tune in KHCB FM 88.5 (San Marcos) or KKER FM 88.7 (Kerrville) for **Back to Genesis** at 8:57 AM Mon-Fri, then **Science, Scripture and Salvation** at 1:30 AM, 8:00 AM and 4:30 PM on Saturdays.

Cartoon Corner

Thanks to **Answers in Genesis** who provides many of these cartoons each month for our newsletter and our presentations. Please think about donating to them in gratitude for this and all the ministries they give us.



Last Month at SABBSA



Global Warming - Special Report: Hidden facts revealed!

What is the truth about global warming? Are the ice caps melting? Will polar bears and penguins soon be found starving on small floating icebergs? Does the future survival of man hinge on an immediate reduction in carbon emissions?

This "**politically incorrect**" **documentary** is an exciting and important tool for all who face the rampant misinformation propagated by ecological alarmists. Global Warming addresses subjects that most others won't touch, including misinformation which is contained in Al Gore's "An Inconvenient Truth".

Global warming is real, but it is not primarily man-made. This biblically based and thoroughly balanced view of climate change reveals that global warming is not a black and white issue. Viewers saw why well-meaning Christians need to be extremely careful when advocating some environmental policies.

Through on-location interviews with leading creationist scientists, climatologists, and other commentators, the dangers and politics of global warming were revealed. We learned how we can be effective in caring for creation, without becoming an unwitting accomplice to the

myths of global warming. This balanced approach to a very "hot" topic equipped us with the information necessary to honor the Creator ... without worshipping the creation.

Next SABBSA Meeting:
Tuesday, March 9, 2021, at 7 pm

Coming to SABBSA in March

DNA Battles: Were Adam and Eve Historical?

Modern genetics provides overwhelming empirical evidence supporting the biblical notion that God created all of life. **DNA Battles** explores several lines of evidence which supports a 6,000-year-old Earth and a 6-day biblical explanation for Creation.

Too often Christians accept some form of evolution as the means for our origins. With modern genetics, it is time to realize empirical science points to Biblical Creation.



The June, 2011 cover article in Christianity Today (CT) lays out several positions for the historicity of Adam and Eve. Francis Collins, director of the National Institutes of Health, started the Biologos Foundation. Biologos is leading the charge for the position that Adam and Eve, if they existed at all, were part of a collective of some 10,000 hominids.

The CT article states, "A Biologos paper by Venema and Falk declares it more flatly: The human population, they say, 'was definitely never as small as two...Our species diverged as a population. The data are absolutely clear on that.'"

But is the data as clear as they state?

What has recent research revealed about mitochondrial DNA?

Does recent research on nuclear DNA support evolutionary predictions?

Hear from 7 scientists and 2 theologians.

Please join us in February for creation science and biblical apologetics teaching you will find nowhere else in Bexar County. Our current COVID protocols call for you to wear a mask into the facility, have your temperature taken and sit distanced from other people and groups not in your immediate family or group. We meet at **Faith Lutheran Church** just **south of the corner of Jones Maltsberger and Thousand Oaks**. The address is 14819 Jones Maltsberger Rd., San Antonio, Texas 78247.

